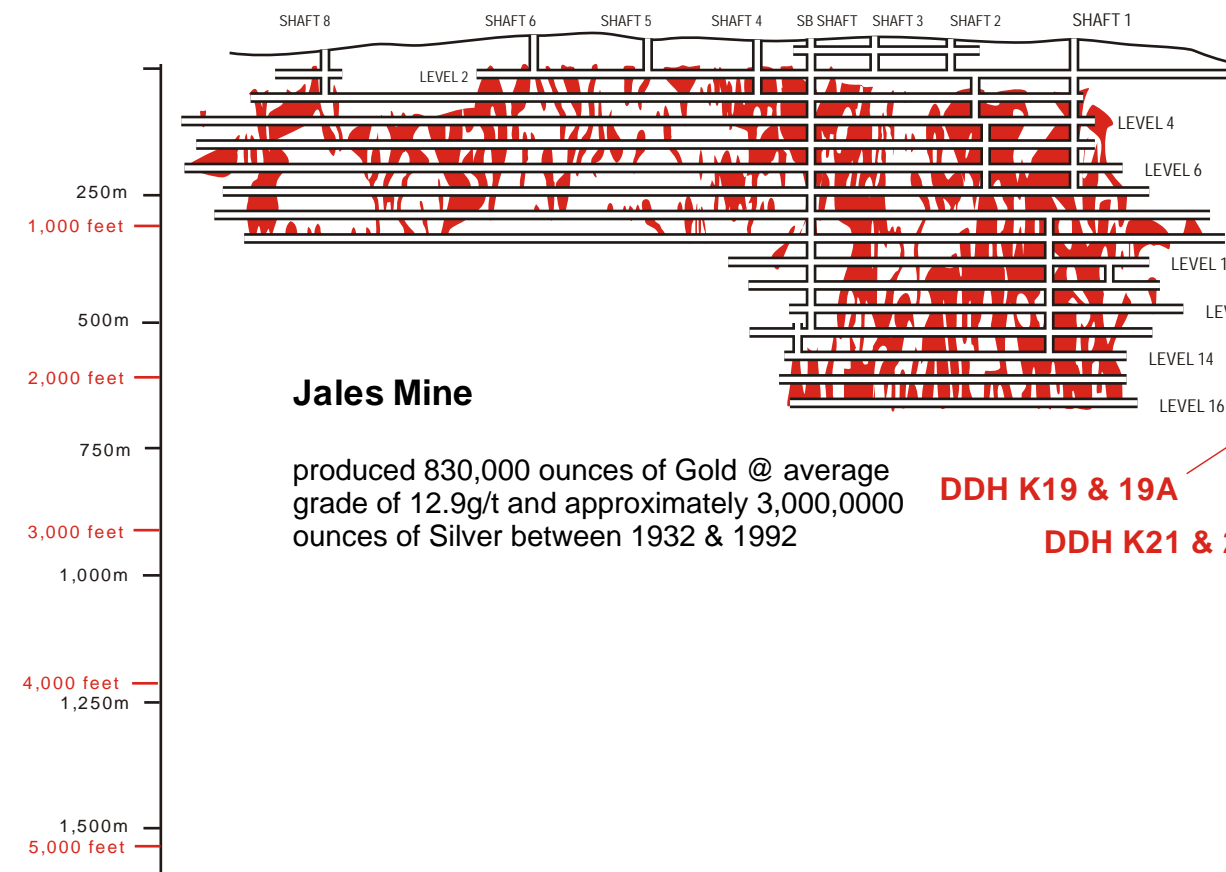


## JALES MINE



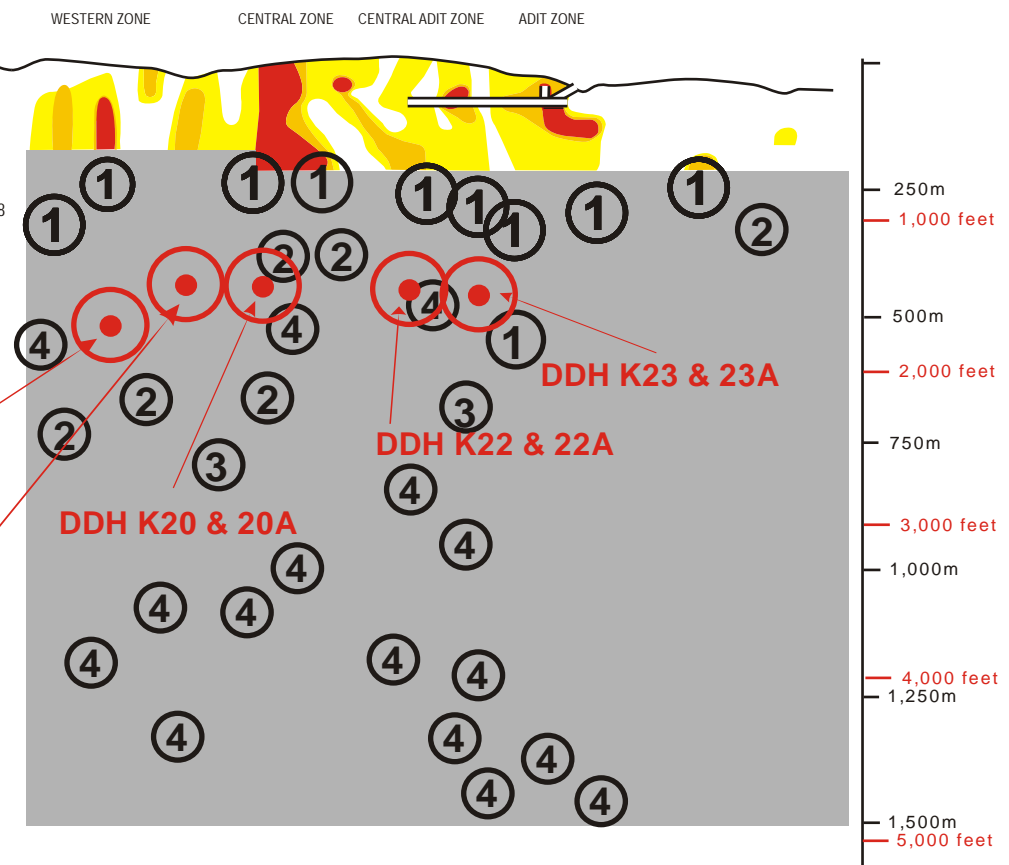
### Jales Mine

produced 830,000 ounces of Gold @ average grade of 12.9g/t and approximately 3,000,000 ounces of Silver between 1932 & 1992

DDH K19 & 19A

DDH K21 & 21A

## GRALHEIRA DEPOSIT



### Gralheira Deposit

Prior to 2005 there were 104 drill holes completed to a maximum depth of 820 ft (250m) Gold mineralization occurs within shoots along the vein (as at the Jales Mine)

The above shows simplified long-section with some of the geophysical targets - view from south to north through multiple survey lines. Quantec identified over 100 anomalies from their work.



**ST. ELIAS MINES LTD.**

JALES PROPERTY, PORTUGAL