

SLI (TSX Venture Exchange)  
EKL (Frankfurt Exchange)  
SELSF (OTCBB)

Suite 314 – 800 West Pender St.  
Vancouver, British Columbia  
Canada V6C 2V6

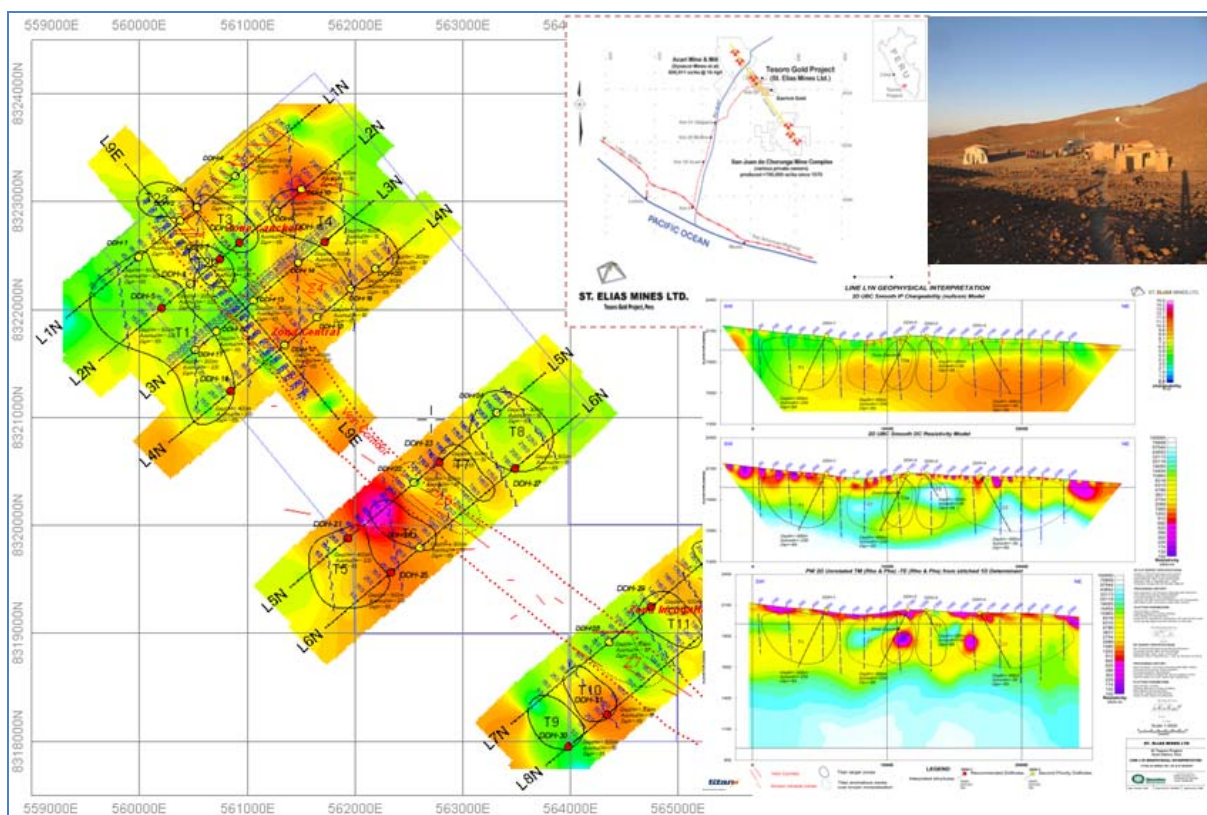


ST. ELIAS MINES LTD.  
www.StEliasMines.com

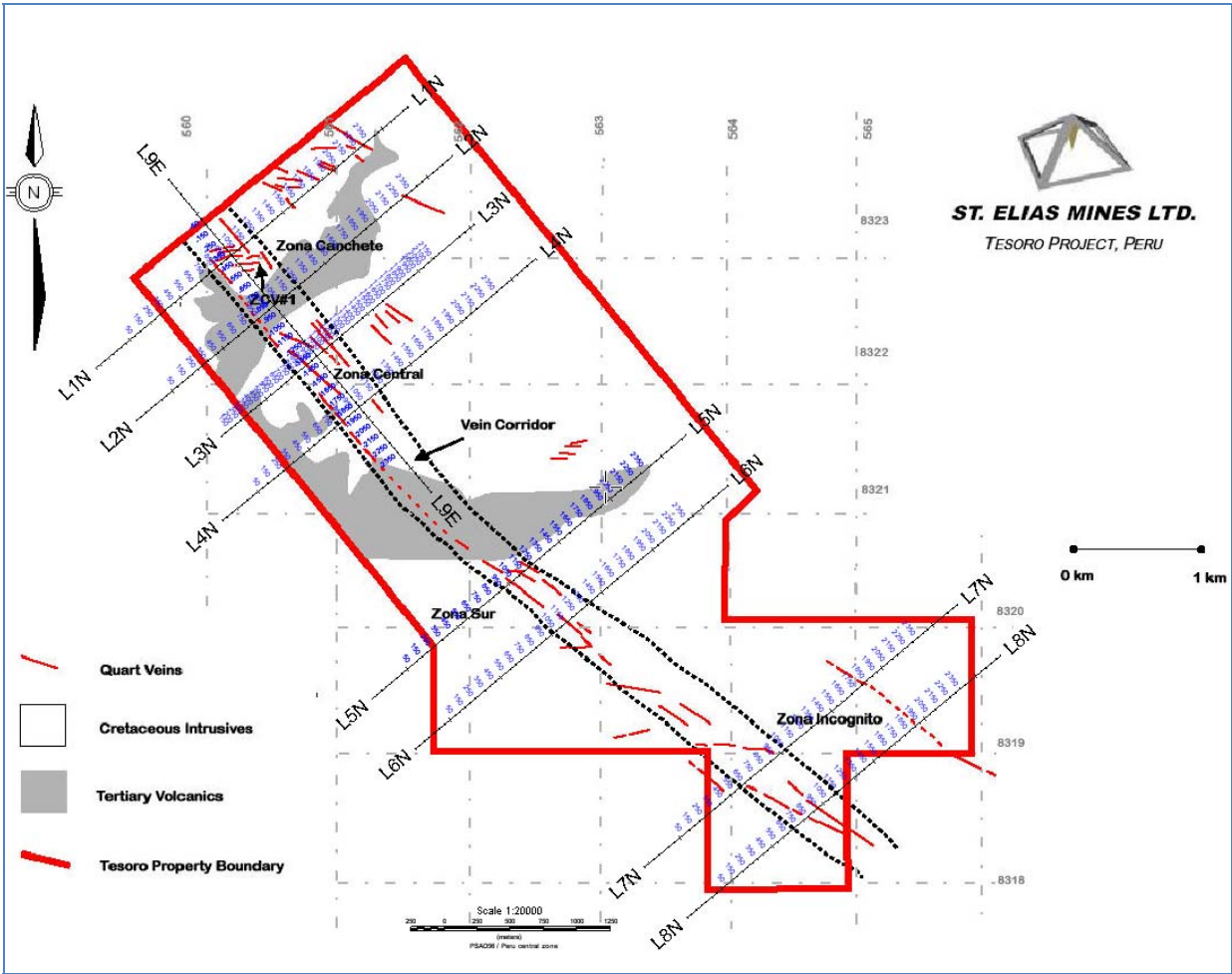
January 26, 2010

Telephone: (604) 669-4677  
Facsimile: (604) 669-9626  
Toll Free: (888) 895-5522

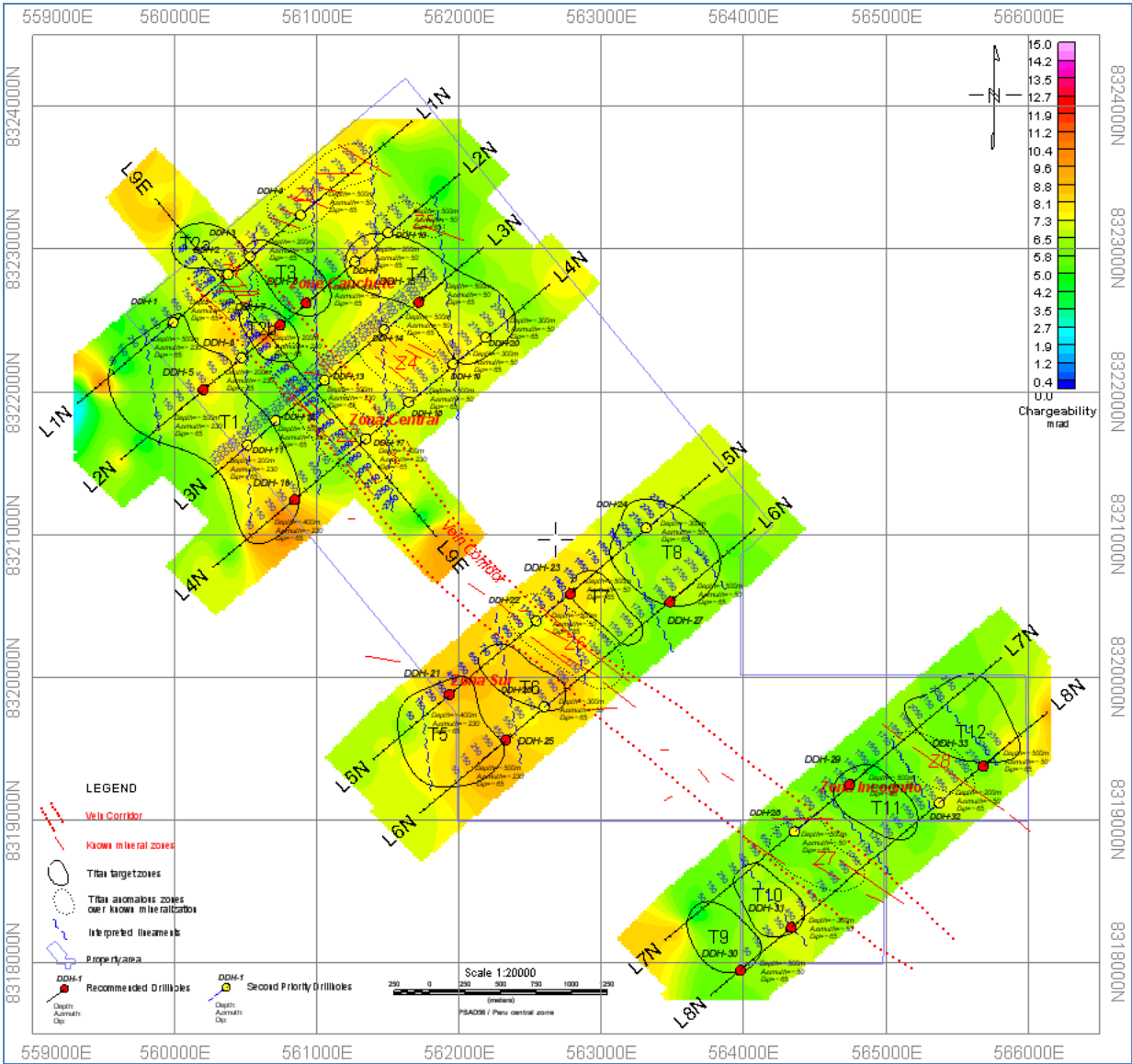
**Titan-24 Tensor Magnetotelluric, Direct Current Resistivity and Induced Polarization Survey over the TESORO GOLD PROJECT, Acari District, Peru**



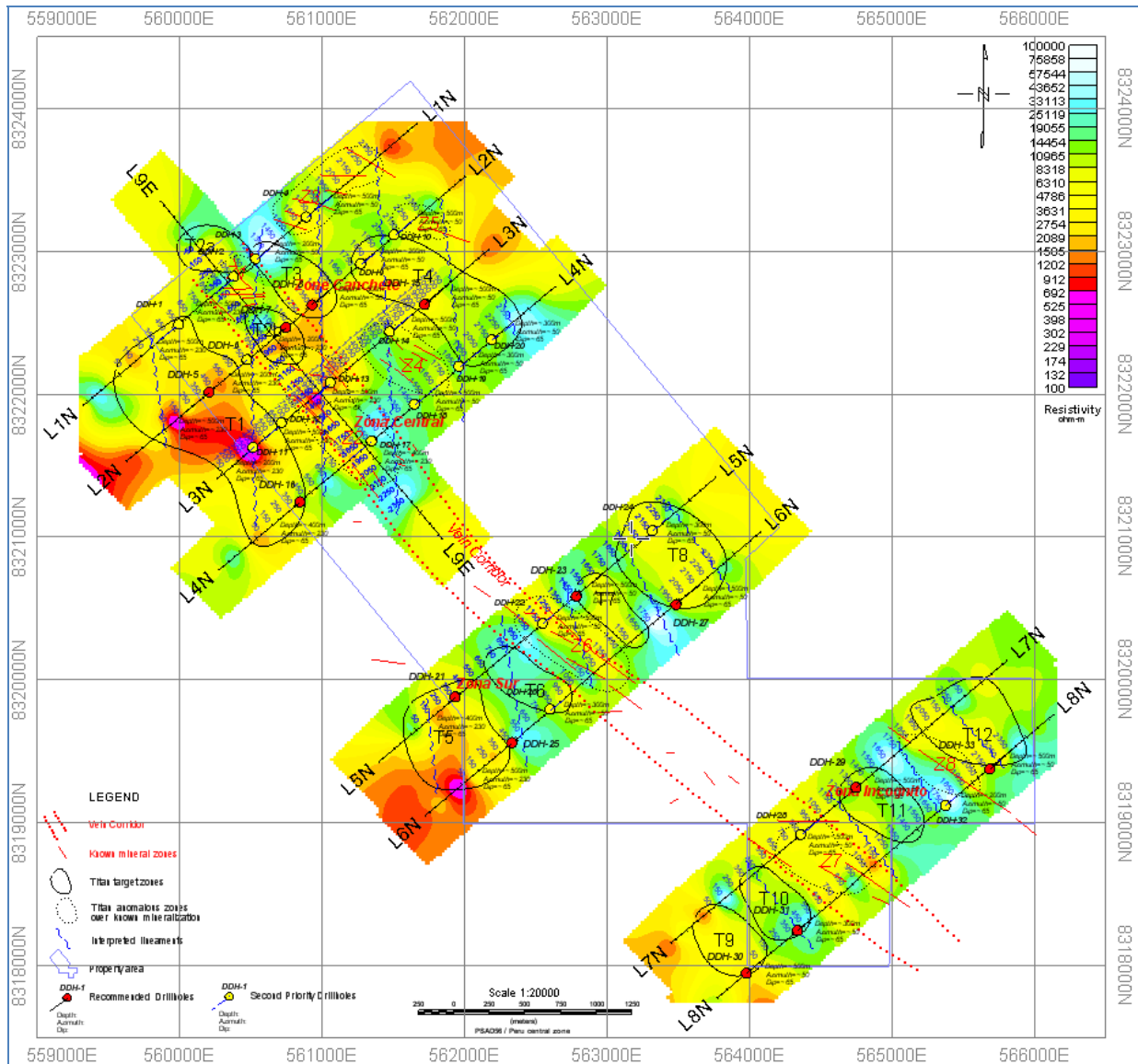
***Property Geology Map with Titan lines overlay***



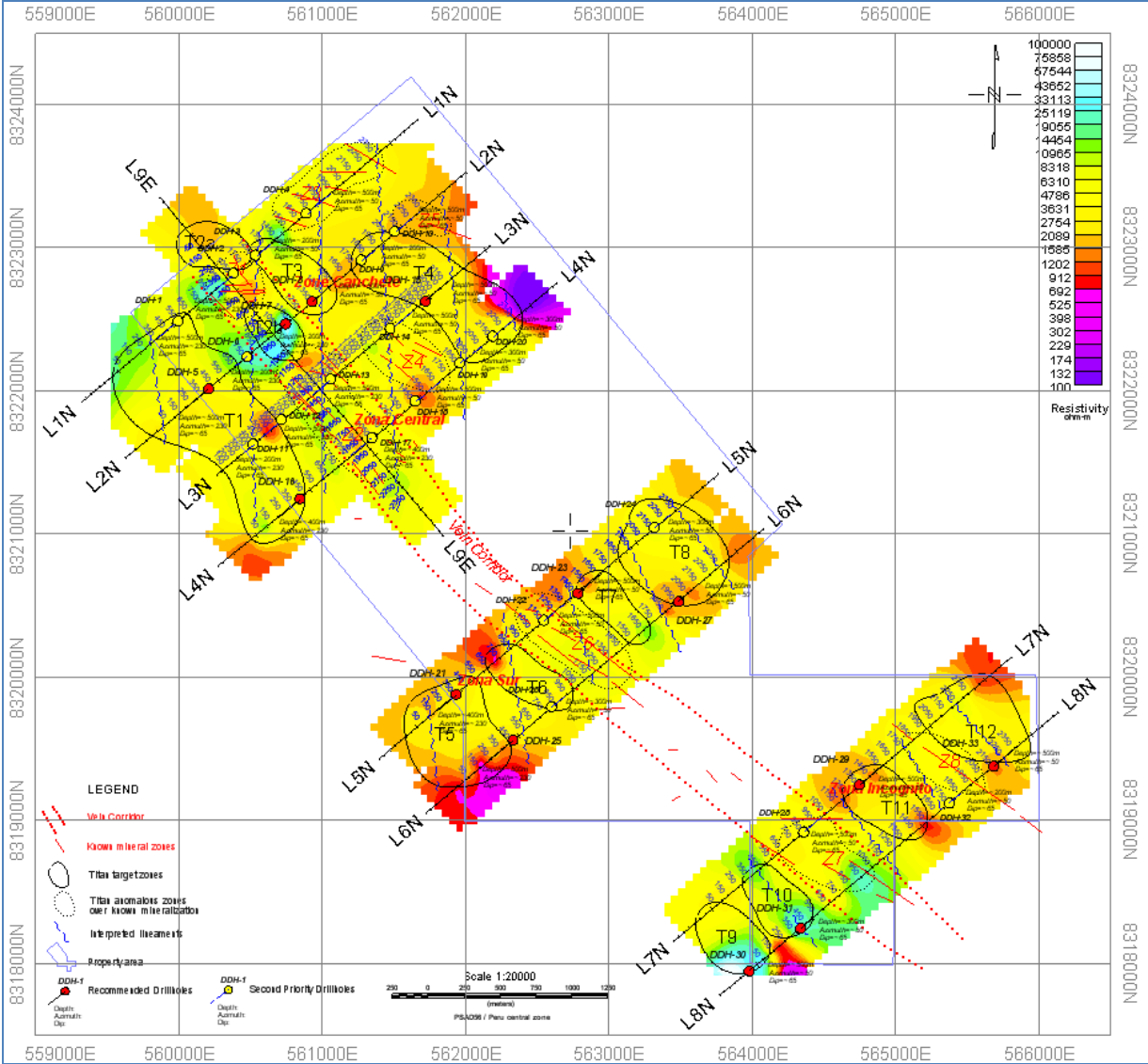
**Interpretation Plans over 2D IP (nullcon) at 150 meters depth**



**Interpretation Plans over 2D DC Resistivity at 150 meters depth**



**Interpretation Plans over 2D MT PU-D4 Resistivity at 150 meters depth**



**Plan Map with Location of the Drillhole Targets at Tesoro Project**

